



The Tarot Reader

TABI's Quarterly E-zine

Issue No: 15

Letter from the Editor

Welcome one and all to the newly renamed TABI E-zine – The Tarot Reader!

Ostara is the season of rebirth and regeneration, so it is most apt that the Ostara issue is the first issue of the Mag under the banner of its new name and for my first issue as Editor.

'The Tarot Reader' was the winning entry from our recent poll to find a new name for the E-zine. We had dozens of suggestions and 25 of the best were put onto the poll. 'The Tarot Reader' was suggested by Clare McHale. Well done Clare! We hope that you have a great time working out which one of the marvellous prizes on offer from Kim at Akashic you should choose!

I am somewhat nervous of stepping into the Editorial sling-backs of Shelley King who has done a fantastic job of editing this E-zine for the past few years. I hope to carry on her good work and keep The Tarot Reader a bright and lively read, bursting at the seams with articles, reviews and competitions. <gulp> No pressure then!

This is also the first issue that is no longer freely available to download from our website. The website will still publish a couple of taster items, but the whole magazine will only be available to members and those who are prepared to pay for the privilege of having access to our glorious mag. On the following pages there are some excerpts from the Ostara issue, if you enjoy them and would like to read more, please see TABI membership details on the website.

This is a bumper issue of 69 pages crammed with Tarot goodies – all written by our members for our members – and I hope that you will find something to tickle your Tarot taste-buds.

I and my assistant editor, Mandi Blackburn, welcome your comments and suggestions for the magazine – please feel free to contact me on newsletter@tabi.org.uk

Blessings of the Season to all our readers.

Alison Cross

Editor, The Tarot Reader

CONTENTS

LETTER FROM THE EDITOR	1
WHERE TO FIND US IN 2005	5
WHO, WHAT AND WHERE OF TABI.....	6
BIRMINGHAM WORKSHOP INFORMATION.....	7
AN A-Z OF TAROT.....	10
POETRY PLEASE : UNKNOWN RHYTHM.....	12
THE WHY'S, WHERE'S, WHO'S AND WASSAT'S OF HAVING A TAROT PRESENCE ON THE WOEFULLY WIDE WEB.....	13
MICKEY QUERENT - PART THREE.....	16
TABI'S FEATURED READER - IAN LAWSON.....	22
HOW TO DESIGN A TAROT DECK.....	26
POETRY PLEASE: PETALS OF BLOOD.....	29
THE QUEEN OF WANDS' PANTIES.....	30
TABI POLL: JUMPING CARDS.....	33
COMPETITION - THE FOOL'S JOURNEY PART 1.....	37
RAINBOW OF CONFUSION: CRYSTALS AND TAROT:	40
TABI'S JANUARY WORKSHOP REVIEW.....	47
TAROT SPREAD: THE BIGGER PICTURE SPREAD.....	48
BOOK REVIEW - LIVING THE QUABALISTIC TAROT (JAYANTI).....	52
DECK REVIEW - THE DRUID CRAFT TAROT.....	53
DECK REVIEW - THE ANCIENT MINCHIATE ETRURIAN TAROT.....	56
DECK REVIEW - TAROT OF ATLANTIS	57
BOOK REVIEW - THE BIG LITTLE BOOK OF TAROT (POLLACK).....	58
BOOK REVIEW - VISCONTI TAROTS (BERTI AND GONARD).....	58
DECK REVIEW - THE MAGICAL MENAGERIE.....	59
BOOK REVIEW - TAKING TAROT TO HEART.....	63
WATCH THIS SPACE! DEVA CARDS.....	66
PLACES TO GO, THINGS TO DO	67

*TABI's Endorsed Readers
will be giving Tarot readings
at the following events in
2005*

Saturday, 14 May 2005

WitchFest England
(Event organised by Children of Artemis)
Fairfield Halls
Croydon

Saturday 28th May, 2005

Pagan Federation Scottish Conference
(Event organised by the Pagan Federation)
EUSA Societies' Centre
60 Pleasance
Edinburgh EH8 9TJ
Scotland.

Friday, 3 June to Monday, 6 June 2005

The Wessex Gathering
(Green Man Festivals)
Isle of Purbeck
Dorset

Saturday, 18 June 2005

WitchFest Wales
(Event organised by Children of Artemis)
Millenium Stadium
Cardiff
Wales

Saturday, 2 July 2005

WitchFest Scotland
(Event organised by Children of Artemis)
Langside Halls
Glasgow
Scotland

Saturday, 30 & Sunday, 31 July 2005

Sun & Moon Festival
(Event organised by Wessex Fairs)
Cannington
Bridgewater
Somerset

Wednesday, 3 - Sunday, 7 August 2005

Big Green Gathering
(Event organised by BGG)
Glastonbury
Somerset

Saturday, 6 August 2005

The Lammas Games
(The Druid Network)
Oxfordshire

Saturday, 27 - Monday 29 August 2005

Herstmonceux Mediaeval Festival
(Event organised by The Malcolm Group)
Herstmonceux Castle
Hailsham
Sussex

September 2005

North East Leeds Convention
(Event organised by The Pagan Federation)
Leeds
Yorkshire

November 2005

WitchFest International
(Event organised by Children of Artemis)
Fairfield Halls
Croydon

*All TABI's Endorsed readers are welcome to
apply to read for TABI at any of these events.
Details about how to become an Endorsed
Reader are set out on the TABI website.
www.tabi.org.uk*

Brian Stevenson
(TABI - Events Co-ordinator)

A Rainbow of Confusion

[Crystals and Tarot, a Beginner's Perspective]

By Clare McHale



[Tarot card from the Tarot of the Dead deck
By Monica Knighton, Llewellyn, 2004.
Crystals round from left to right,
Snowflake
Obsidian, Rose Quartz,
Chrysocolla, Purple Fluorite, Red
Jasper]

As a beginner the range of associations for tarot can seem insurmountable and downright confusing, so if you're also interested in crystals and want to utilise them in your tarot work where do you start? And why would you want to?

Adding another dimension to your tarot work could combine and enrich two interests. Perhaps crystals will add a special energy to your readings? Or protect your tarot deck from bad vibes? But whatever your reasons for combining crystals and tarot you need to get a foothold somewhere.

Unfortunately, there isn't a definitive list of associations that matches every deck or lifestyle, but choosing a ready made list is still a good place to start and a base from which you can broaden your knowledge.

As for me, I'm a Rider-Waite-Smith/Mary K Greer type of gal, mostly because they're my early influences and I'm comfortable with the associations, for example Fire for Wands and Air for Swords.

But I'm also a list-lover; I love lists! Why, oh why isn't there a big mother of them all, ass-kicking definitive list out there? Why? Why?

I know, I have issues, work with me people.

In the end there is no right or wrong with tarot associations, which is one of tarot's greatest charms and, for the learner, one of its biggest frustrations!

And on that note here are two sets of crystal/stone associations for you to ponder and possibly utilise in your tarot work.

The first from Mary K Greer's book '*Tarot for Your Self*' and the second from Scott Cunningham's '*Encyclopaedia of Crystal Gem & Metal Magic*'. Both published by Llewellyn.

Major Arcana	Tarot for Yourself by Mary K. Greer	Crystal, Gem & Metal Magic by Scott Cunningham
0-Fool	Tourmaline, Turquoise	Agate
1-Magician	Tiger-Eye, Citrine, Fire Opal, Agate	Quartz Crystal [can be charged with the attributes of any stone]
2-High Priestess	Moonstone, Pearl	Emerald, Pearl
3-Empress	Emerald, Rose Quartz	Peridot, Olivine, Turquoise
4-Emperor	Ruby	Ruby
5-Hierophant	Topaz, Carnelian, Lapis Lazuli	Topaz
6-Lovers	Alexandrite, Agate	Rose Quartz
7-Chariot	Amber, Chalcedony	Staurolite, Cross Stone, any twinned crystals
8-Strength	Cat's Eye, topaz, Chrysolite	Diamond, Herkimer Diamond, Garnet
9-Hermit	Peridot, Bloodstone	Sapphire, Blue Tourmaline
10-Wheel	Sapphire, Amethyst, Lapis	Sardonyx, Black Opal
11-Justice	Emerald, Coral, Jade	Carnelian
12-Hanged man	Beryl, Aquamarine	Beryl, Aquamarine
13-Death	Snakestone, Bloodstone	Amber
14-Temperance	Jacinth, Amethyst	Amethyst
15-Devil	Black Diamond, Jet, Obsidian	Black Diamond, Black Tourmaline, any square black stone
16-Tower	Ruby, Garnet	Lodestone, Lava
17-Star	Turquoise, Rock Crystal	Meteorite, any Star Stone
18-The Moon	Milk Opal, Moonstone, Pearl	Moonstone, Chalcedony
19-Sun	Diamond, Heliotrope	Tiger's-Eye, Sunstone
20-Judgement	Fire Opal, Malachite	Fossil
21-World	Onyx, Jet, Lapis Lazuli, Black Pearl	Opal, Kunzite

Obvious matches are in red, I don't know enough about crystals to match up the generalisations such as 'fossil' or 'any twinned crystals'.

NB: '*Quartz crystals can be charged with the magical attributes of any stone, as can opal, through your visualization.*'
[Cunningham, S. (2002). *Encyclopaedia of Crystal Gem & Metal Magic*. Llewellyn. p. 191

Now that we have some associations to scratch our heads over, one of the most common combinations of crystals and tarot is the use of a crystal to cleanse and/or protect a tarot deck.

You can find the rest of Claire's article in the Ostara issue of The Tarot Reader – please see TABI's website for membership details.

Deck Review

TAROT OF ATLANTIS

Published by Lo Scarabeo

Review by Brian Stevenson



People have been fascinated by the legend of Atlantis since the Greek philosopher Plato first wrote about the city over 2,500 years ago. These cards depict the people and stories of Atlantis re-interpreted through the Tarot. Some of the Major Arcana show the destruction of Atlantis. For example, The Tower is illustrated by a gigantic tidal wave about to engulf the city walls and Judgment shows a volcano and earthquake, leading to the city's demise. Some cards are more contemplative; The Star shows an Astrologer studying the heavens and presumably predicting the imminent catastrophe.

Some cards will appeal to puzzle-solvers. For example, The Lovers shows two near-naked men wrestling. This may not make much sense until you remember that during his life Plato was more famous for being a wrestler than he was for being a philosopher.

All the Minor Arcana are fully illustrated. These depict everyday life in Atlantis. The Pentacles concentrate on trading activities, Wands show idols and statues, Cups are illustrated with chalices, vases and bowls and Swords depict weapons and fighting. Several of the Cups cards show orgies where naked couples writhe in drunken ecstasy. There are some references to The Rider-Waite, but not enough to class this deck as a Rider-Waite 'clone'.

The small booklet includes a helpful four-page article about the legends of Atlantis.

The deck will certainly appeal to anyone interested in Atlantis and its stories. However, because the cards are not particularly influenced by The Rider-Waite, they may not be suitable for beginners.

Watch this space!

Welcome to Watch This Space! A new section where you, the members, show us your favourite decks in progress or your own completed decks looking for a publisher. For this first Watch This Space, we feature the Deva Cards by TABI member Cilla Conway. Here's what Cilla has to say:

“The Deva Cards are an entirely new concept - and at the same time, a very ancient one that is now returning into consciousness. *Deva* is a Sanskrit word meaning 'shining one'; the Devas can be thought of as primordial energies, inner blueprints for every aspect of existence - from the smallest sub-atomic particle to the Divine Source. The Deva cards illustrate the concept of the invisible energy patterns in the Universe.

“The current awareness of Devas began in the late 1960s when the founders of Findhorn began working with devic energy to create a garden of transcendent beauty on sand by the Moray Firth. Twenty years later the small, beguiling Angel pack from the Transformation Game (also devised by two Findhorn members) heralded a popular explosion of interest in angels, but to date nothing has depicted the full gamut of powerful cosmic energies of the Devas.

“The Deva Cards comprise sixty-four cards, beginning with the Unmanifest and the Void. Then after untold aeons something changes - First Light. Divine Consciousness forms and thus Divinity is born. The transcendental or angelic energies emanate take shape, as well as numinous qualities such as courage, rebirth, metamorphosis. More ambivalent energies and the fundamental laws of chaos and order, light and dark, time and space all combine in Creation. The second part of the pack is the Manifest - the cosmos, stars and Sun, earth and elements, seasons, and life. Finally we move into the microcosm - cells, atoms, quanta, and back through dark matter to the Unmanifest once more.

“As befits these transcendent energies the cards are abstract but evocative, with users invited to make their own intuitive associations. The accompanying book will offer ideas on how to journey shamanically through the images, and there'll be a large section of readings. Also included will be ideas on the correspondences of devas to numbers, the DNA chromosomes, music and sacred geometry, even the hexagrams of the I Ching.”

More cards can be seen at www.cillaconway.com; and there'll be an illustrated talk on the Devas entitled '*A different breed of Angel*' on Wednesday 6th April, at Secret Chiefs, the Devereux pub, 20 Devereux Court, off Essex Street, London WC2. Time: 19.00 for 20.30.



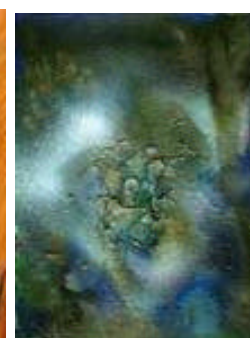
Air



First Light



Logros



Plant

Places to Go, Things to Do.....

The latest offerings from the esoteric community...

Courses

Leamington Spa, Warwickshire

Sam Grierson is running a Tarot School - 17th April in Leamington Spa, Warwickshire.

Next Event Sunday April 17th 10:00 - 14:00

Venue: Bath Place Community Centre, Leamington Spa, Warwickshire

<http://www.bathplace.org/home.html>

Introduction to reading the Tarot Cards. No prior experience necessary, only enthusiasm and an open mind needed!

If you have your own cards, bring them along. The Course uses the Rider Waite Deck, they can be bought on the day for £12.

Course Fee: £35

Contact: divalcrystals@btinternet.com

Fayres/Festivals/Conferences

Crewe

Mind, Body, Spirit fair at the Victoria Community Centre - March 26th/27th opens at 10.00am

Leek

Psychic fair at the Foxlowe - April 1st/2nd, opens at 11.00am

Denbigh

Market Hall, Psychic fair - April 24th, opens at 10.00am.

Market Drayton

psychic fair at Corbet Arms Hotel - April 30th, opens at 10.00am

London

Beltane Bash - Sunday 29th and Monday 30th May.

See <http://www.paganfestivals.fsnet.co.uk/paganfestivals.fsnet.co.uk/>

Torquay

West Country Tarot Conference – 2nd July Riviera Conference Centre in Torquay. Details on Kim's web site www.akashic.co.uk

Birmingham

TABI Workshop Weekend – 9th and 10th July – see page 5 of this issue for full details

London

Tarot Conference is confirmed for 15th October . Check out www.akashic.co.uk for full details.
Discounts for TABI members!

Regular Meetings

Nottingham - Astrology Group meets monthly every 2nd or 3rd Wednesday for talks and practical work. Further details from Gill on 0115 970 3051

Manchester - Turn of the Cards - a Tarot discussion group on the third Thursday of every month, hosted by Madame Estelle in New Aeon Books upstairs meeting room. Starts 7pm and the cost is £2.50 (£1.50 concessions). Phone 0161 232 0934

Rugby - Tarot courses run in every Wednesday 19:00 - 21:00,
£15 per session. Please contact Sam for venue.

Dival Crystals and Tarot

Tarot Readings and Tarot School

<http://uk.geocities.com/divalcrystals@btinternet.com>

divalcrystals@btinternet.com

Theme/special interest/fun decks

Clare McHale says: I love the cards on Jamie's website - even though they're a collectable rather than a usable deck of Majors only, there are also prints available to buy if you've got the money!
www.jamiehankin.com

Tarot New Releases

<http://www.tarotgarden.com>

<http://www.llewellyn.com>

www.usgamesinc.com

Shopping/Sales

www.akashic.co.uk - On our front page each month we are offering a big discount on a tarot item, after Easter we are loading The Watkins Tarot Handbook on to the front page. The book is priced at 9.99 and the special offer price is 6.99 .

www.merrydaytarot.com/

www.llewellyn.com/bookstore/sale.php - for reduced items from Llewellyn

<http://browse.barnesandnoble.com> - p&p to the UK is approx £3 per book and £1 per DVD (but check site just to make sure!)

www.astroamerica.com

Reviews etc

[Janet Boyer's Homepage](http://Janet.Boyer's.Homepage)

tarot.llewellyn.com/ - check out the articles and reviews at Llewellyn

www.aeclectic.net - possibly the most popular site on the web for deck images and reviews

TABI's Own Links

The Tarot Association of the British Isles Web Site

<http://www.tabi.org.uk>

Past issues of the Newsletter:

<http://www.tabi.org.uk/page.php?page=newsletter>

To request a Free Reading:

<http://www.tabi.org.uk/freereading/freeread.php>

Discussion forums:

<http://p213.ezboard.com/btabi>

UK Tarot Talk - our General Discussion List on Tarot, for readers of all levels, hosted on Yahoogroups. <http://uk.groups.yahoo.com/group/UKTarotTalk/>

Our lists for volunteers and students are available from the site and/or when you sign up for volunteering, reading or learning the tarot. See the TABI web-site for details.

We hope you have enjoyed reading TABI News. Please address all enquiries to the Editor

? copyright TABI & the individual named authors 2005